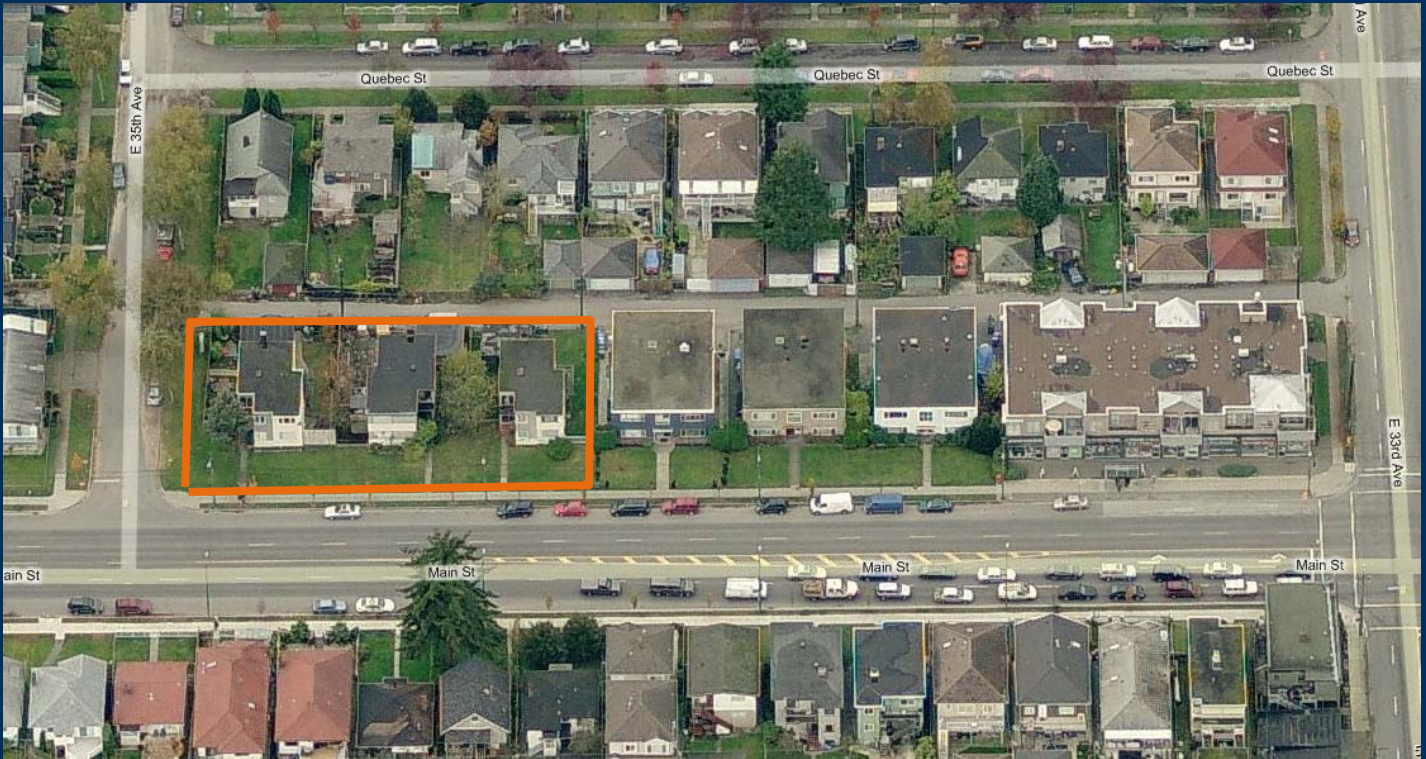


RILEY PARK DEVELOPMENT OPPORTUNITY

5037, 5067 & 5087 MAIN STREET, VANCOUVER BC



OFFERING FOR SALE - London Pacific is pleased to present an exciting City of Vancouver Development Opportunity totaling 16,350 SQFT within the Riley Park Neighbourhood. This assembly offers incredible access from Main Street & 35th Avenue, and is located seconds from Holburn's future Little Mountain Development Site, Queen Elizabeth Park, and Nat Bailey Stadium. The vibrant Riley Park Neighbourhood also boasts many neighborhood amenities such as schools, recreational centres, and shopping plazas, making it the place to be!

GROSS SITE AREA:	16,350 SQFT
ZONING:	RM-3A
PROPOSED ZONING:	CD re-zoning based on 4 - 6 storey wood frame development
APPROX FSR:	up to 2.50
CIVIC ADDRESS:	5037, 5067, & 5087 Main Street
PURCHASE PRICE	Contact Agent

For more information, please contact:

LONDONPACIFIC

PROPERTY AGENTS
206-3815 Sunset Street
Burnaby, BC V5G1T4
Canada

Ben Williams

Personal Real Estate Corporation

604.420.2600

bwilliams@londonpacific.ca
www.londonpacific.ca