

# LONDON PACIFIC



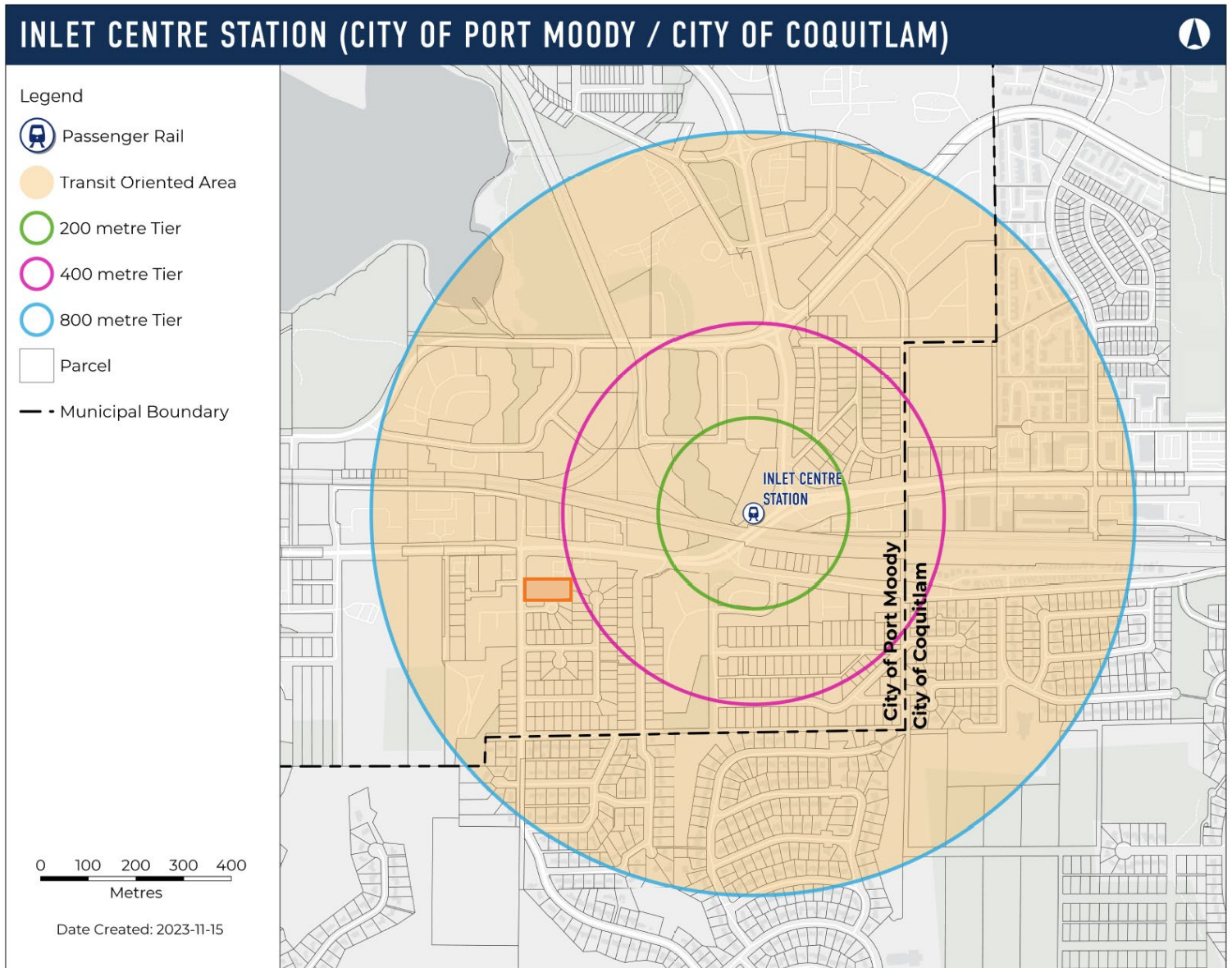
## POTENTIAL TRANSIT-ORIENTED AREA DEVELOPMENT OPPORTUNITY

112 MORAY STREET  
PORT MOODY, BC



# 01 DEVELOPMENT OPPORTUNITY

London Pacific is pleased to present a rare opportunity to acquire a potential Transit-Oriented Area (TOA) development site located within 500 metres of Port Moody's Inlet Centre SkyTrain Station. With the recent introduction of new legislation by the Province of British Columbia, this site falls within the identified Transit-Oriented area, aimed at establishing transit supportive densities near rapid transit stations.



TOA Type	Transit Hub Type	Prescribed Distance	Minimum Allowable Density (FAR/FSR)	Minimum Allowable Height (Storeys)	Type of Building
TOA Type 1	1A) Rapid Transit	200m or less	Up to 5.0	Up to 20	Condo Tower
		201m - 400m	Up to 4.0	Up to 12	High Rise, Mid-Rise
		401m - 800m	Up to 3.0	Up to 8	Mid-Rise

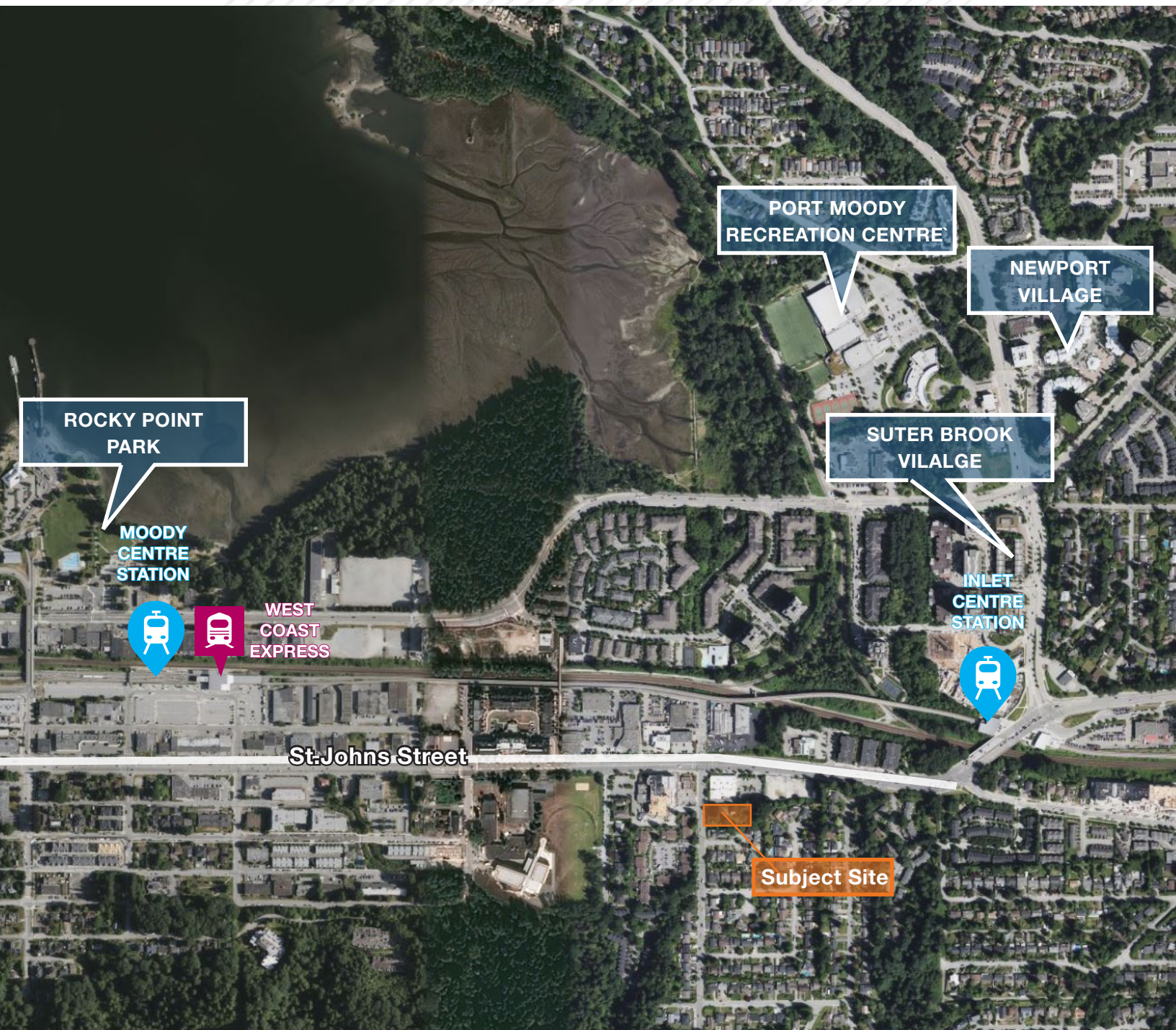


# 02 DEVELOPMENT OVERVIEW

This exceptional offering encompasses a ± 43,560 SQFT potential TOA development site located in Port Moody. Its convenient location places it within a 10-minute walk of the Inlet Centre SkyTrain Station and within a 15-minute walk of the Moody Centre Station with access to the West Coast Express Line. Currently, the site has Third Reading Approval for a 28-unit townhouse development.

## Property Information

Address:	112 Moray Street
PID:	012-011-932
Neighbourhood	Port Moody
Gross Site Area:	± 43,560 SQFT
Current Improvement:	Heritage Home – Nielsen Residence
Current Zoning:	RS1 – Single Detached Residential





# 03 HERITAGE REVITALIZATION AGREEMENT

The subject site includes a Heritage Revitalization Agreement in place for the Nielsen Residence, a one-storey, wood-frame cottage situated on the east side of Moray Street.

Built circa 1933, the Nielsen Residence is a good example of the type of housing constructed in the interwar era for Port Moody's working population. The house reflects the ongoing development of Moody Centre, the residential neighbourhood situated north of the historic area of commercial and institutional buildings located at the junction of the railway and the waterfront.



**NIELSEN HERITAGE RESIDENCE TODAY**



**PROPOSED RESTORATION**



# 04 SITE LOCATION

This site presents a unique opportunity to capitalize on Port Moody's high-density development focus. Its close proximity to Rocky Point Park, Port Moody Public Library, City Hall, the Community Theatre, Recreation Complex, and Eagle Ridge Hospital creates a highly desirable location. The surrounding Inlet Centre boasts beautiful parks, trails, and a vibrant retail scene featuring local and artisan shops, restaurants, and everyday essentials.

*Inlet Centre SkyTrain Station*



*Rocky Point Park*



*Port Moody Recreation Complex*



*Suter Brook Village*



## ISAAC FOORD \*PREC

---

Associate Vice President, Development Land & Investment  
778.875.6996  
isaac@londonpacific.ca

## LUCAS CHAVEZ

---

Sales Representative, Development Land & Investment  
236.558.4480  
lucas@londonpacific.ca

# LONDON PACIFIC

London Pacific Property Agents Inc. | T 604 420 2600 F 604 420 2206 | [londonpacific.ca](http://londonpacific.ca)

E & O.E.: All information contained herein is from sources we deem reliable, and we have no reason to doubt its accuracy; however, no guarantee or responsibility is assumed thereof, and it shall not form any part of future contracts. Properties are submitted subject to errors and omissions and all information should be carefully verified. All measurements quoted herein are approximate. \* Personal Real Estate Corporation.

This publication is the property of London Pacific Property Agents Inc. and is protected by domestic and international copyright, trade name and other laws, and other rights unless otherwise specified. Any modification, reproduction, alteration or adaptation is strictly prohibited. © London Pacific Property Agents Inc. reserves all rights.