



## WELLINGTON & MARY

A PRIME DEVELOPMENT OPPORTUNITY  
IN THE HEART OF CHILLIWACK

45798, 45788 & 45784 WELLINGTON AVE  
CHILLIWACK, BC

LONDON  
PACIFIC



# SITE SUMMARY

London Pacific is proud to present the exclusive opportunity to acquire this exceptional 31,320 sf development site nestled right at the heart of Chilliwack, on the corner of Wellington Av and Mary Street.

This site has been designated as Residential 3a, which comes with the added advantage of a density bonus, allowing for Residential 4, Mid-High-Rise Apartment as per the Official Community Plan (OCP).

Strategically positioned near key amenities and transportation routes, this potential development site opens doors to a world of possibilities for investors and developers keen on being part of Chilliwack's thriving and vibrant community.

## A PRIME DEVELOPMENT OPPORTUNITY IN THE HEART OF CHILLIWACK



## DEVELOPMENT HIGHLIGHTS

- Mid- High Density Development Site with **Rental** or **Strata** Development Opportunity
- Prime Location in the Centre of Chilliwack with schools, parks, shopping, and lifestyle amenities all within walking distance
- One block from Main Street
- Located within the Health District and within a 10-minute walk to Chilliwack General Hospital
- Within 330 meters of the Frequent Transit Route 51
- Chilliwack Residential 4 OCP designation allows the potential for up to 450 UPH
- Share Sale Opportunity! PAY NO PROPERTY TRANSFER TAX!

COMMERCIAL  
REAL ESTATE  
**REDEFINED**



# DEVELOPMENT OVERVIEW

Guided by the City’s Official Community Plan (OCP) vision, the Mid-High Rise Apartment designation is aimed at fostering a blend of high-density housing choices right on the doorstep of the downtown core. This forward-thinking classification provides developers with the creative freedom to create a lively project that effectively meets the surging demand for rentals and strata ownership.

This attractive opportunity is located less than one block North West of the flagship development, the Mainstreet Station, by the Mann Group, this project is revitalizing downtown Chilliwack as its first major construction project.

With convenient access to schools, hospitals, parks, and a well-established transit network, all set within a flourishing market and surrounded by a wealth of amenities, this property emerges as an extraordinary opportunity for development.

Share Sale Opportunity - Pay No Transfer Tax

CIVIC ADDRESS	Lot Size (Sqft)	Current Zoning	Proposed OCP Designation	Proposed UPH
45798 Wellington Av	15,720	C2	Mid-High Rise	450
45788 Wellllington Av	7,800	C2	Mid-High Rise	450
45784 Wellington Av	7,800	R6	Mid-High Rise	450

CHILLIWACK DOWNTOWN LAND USE AND DEVELOPMENT PLAN

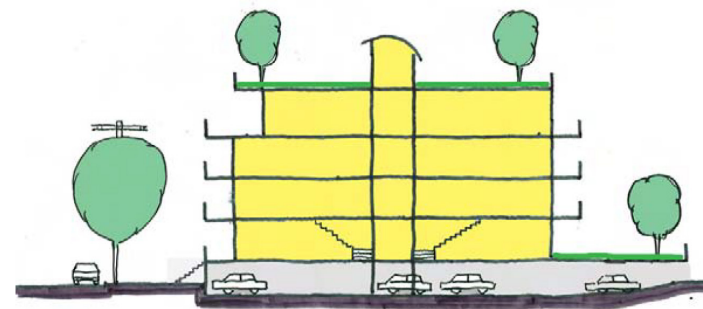




# OFFICIAL COMMUNITY PLAN

## RESIDENTIAL 3A (DENSITY BONUS)

**Intent:** Pursuant to the provisions of Section 904 of the Local Government Act, higher density up to the density allowed in the Residential 4 designation from a base density consistent with the Residential 3 designation will be considered in exchange for the provision of affordable housing or other specified social, recreational and environmental amenities consistent with the policies of this plan.



4 storey (wood frame) apartment incorporating green roofs and balconies

## RESIDENTIAL 4 - MID - HIGH RISE APARTMENT

**Intent:** to create a mix of high density housing options immediately adjacent to the downtown core suitable for a range of income levels and lifestyles including singles, couples, seniors, and families with children.

### Appropriate Building Types:

- Point tower and podium (slender apartment tower coming out of structured parking base wrapped with town houses along public streets)
- Mid rise terrace buildings (buildings that step back from the street front)

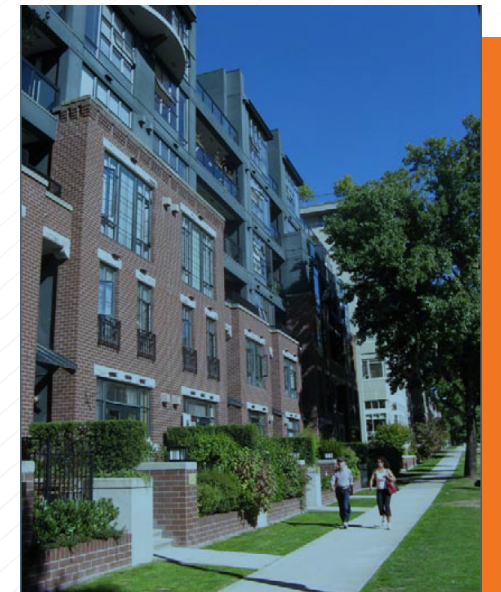
**Density:** up to 450 UHa

**Height:** up to 18 storeys

**Parking Ratio:** 1:1.25



high rise apartment incorporating green roofs and balconies with structured parking wrapped by townhouses at street level







Cultus Lake

Highway 1

Chilliwack General Hospital

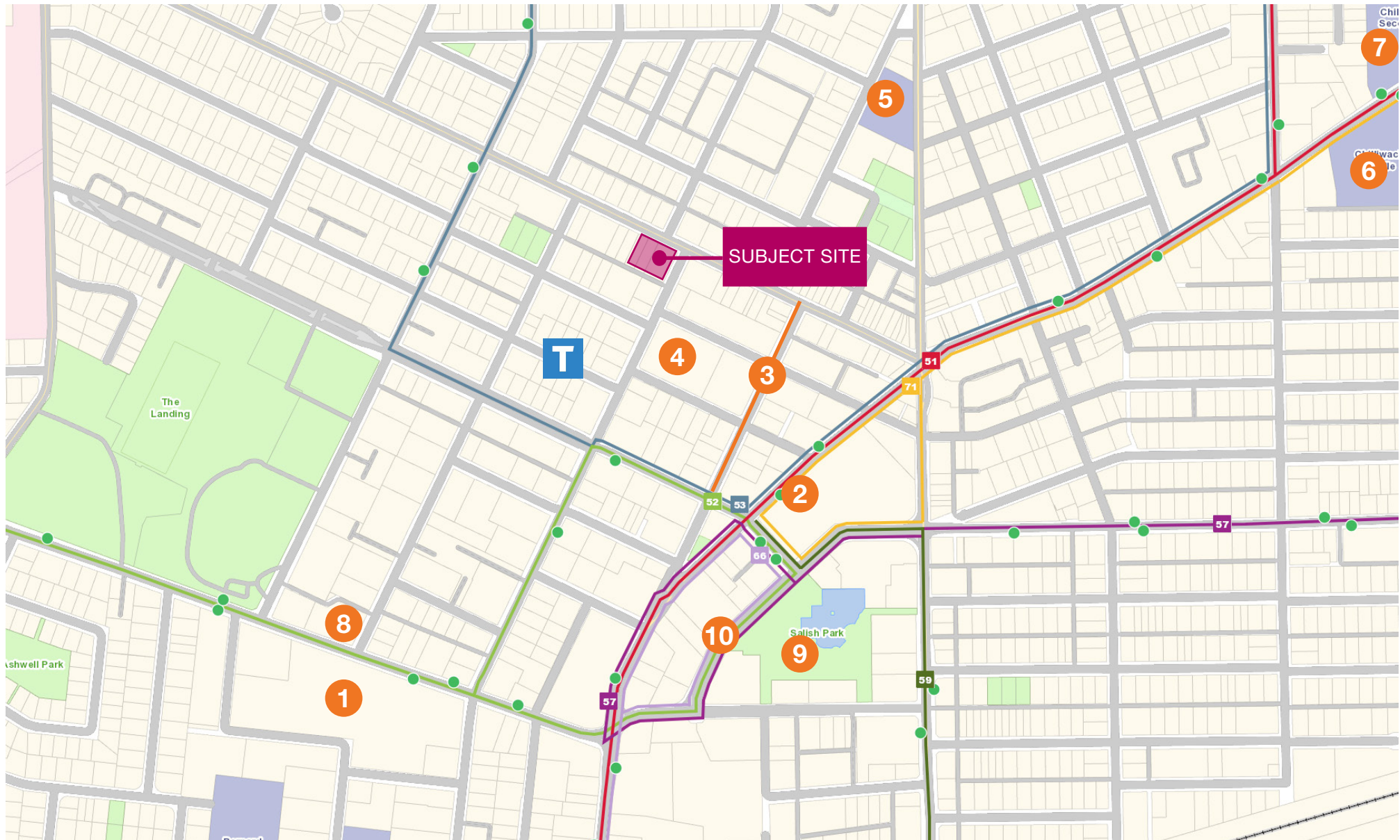
Downtown Chilliwack

MANN  
GROUP

SUBJECT SITE



# LOCATION HIGHLIGHTS



-  SUBJECT SITE
1. Chilliwack General Hospital
  2. Route 51 Transit Stop
  3. Main Street
  4. Mann Group Mainstreet Development
  5. Chilliwack Central Elementary
  6. Chilliwack Middle School
  7. Chilliwack Secondary School
  8. Chilliwack Leisure Centre
  9. Salish Park
  10. Chilliwack Library

## CHILLIWACK

Chilliwack is a hidden gem tucked away in the Fraser Valley. Our property, located on Wellington Avenue and Mary Street right by the downtown area, offers you a glimpse into the heart of this friendly community. Chilliwack is known for its stunning natural landscapes, affordability, and welcoming atmosphere. It's a place where you can easily access excellent schools and diverse job opportunities, all while being a stone's throw away from the tranquil shores of Cultus Lake. Chilliwack isn't just a place to live; it's an invitation to enjoy the great outdoors and be part of a close-knit community.



JOHN WESTACOTT

Associate, Development Land & Investment  
236.515.6002  
jwestacott@londonpacific.ca

MIKE GUINAN-BROWNE PREC

Vice President, Multi-Family, Investments & Development Land  
604.805.9904  
MGuinanBrowne@londonpacific.ca



London Pacific Property Agents Inc. | T 604 420 2600 F 604 420 2206 | londonpacific.ca

E & O.E.: All information contained herein is from sources we deem reliable, and we have no reason to doubt its accuracy; however, no guarantee or responsibility is assumed thereof, and it shall not form any part of future contracts. Properties are submitted subject to errors and omissions and all information should be carefully verified. All measurements quoted herein are approximate. \* Personal Real Estate Corporation.

This publication is the property of London Pacific Property Agents Inc. and is protected by domestic and international copyright, trade name and other laws, and other rights unless otherwise specified. Any modification, reproduction, alteration or adaptation is strictly prohibited. © London Pacific Property Agents Inc. reserves all rights.