

FOR SALE

LONDON
PACIFIC



MOUNT PLEASANT | BROADWAY TRANSIT-ORIENTED

HIGH DENSITY SECURE RENTAL DEVELOPMENT OPPORTUNITY

**MRTB
BROADWAY
PLAN**

453, 461, 469 E 10th Ave &
2536, 2540 Guelph St, Vancouver



Jerry H. Lee PREC*

*PERSONAL REAL ESTATE CORPORATION

Ben Williams PREC*

Alexander Lougheed

OPPORTUNITY SUMMARY



London Pacific is excited to present an **18-storey rental tower development opportunity** close to East Broadway & Kingsway, in the Mount Pleasant neighbourhood of the newly approved Broadway Plan. The subject site has been designated as medium to high density rental residential with retail uses at grade, with a **base density of 5.5 FSR**. The total gross site area of approximately 25,544 sqft allows for a total of 140,492 buildable sqft, with opportunities of site expansion. The subject site is a highly attractive assembly with favourable Tenant Relocation & Protection Policy considerations and features a less than 10-minute walk to two future Millennium Line SkyTrain stations within the Broadway Subway Expansion.

The City of Vancouver approved the Broadway Plan on June 22, 2022, and went into effect September 1, 2022.



THE OPPORTUNITY

ASSEMBLY SUMMARY

Address

453, 461, 469 E 10th Ave
& 2536, 2540 Guelph St,
Vancouver

Current Zoning

RT-5 Two-Family Dwelling

Proposed OCP Designation

Medium to High-Density
Mixed-Use Apartment

Density

5.5 FSR (18 Storey)

Gross Site Area

± 25,544 SQFT

Total Buildable

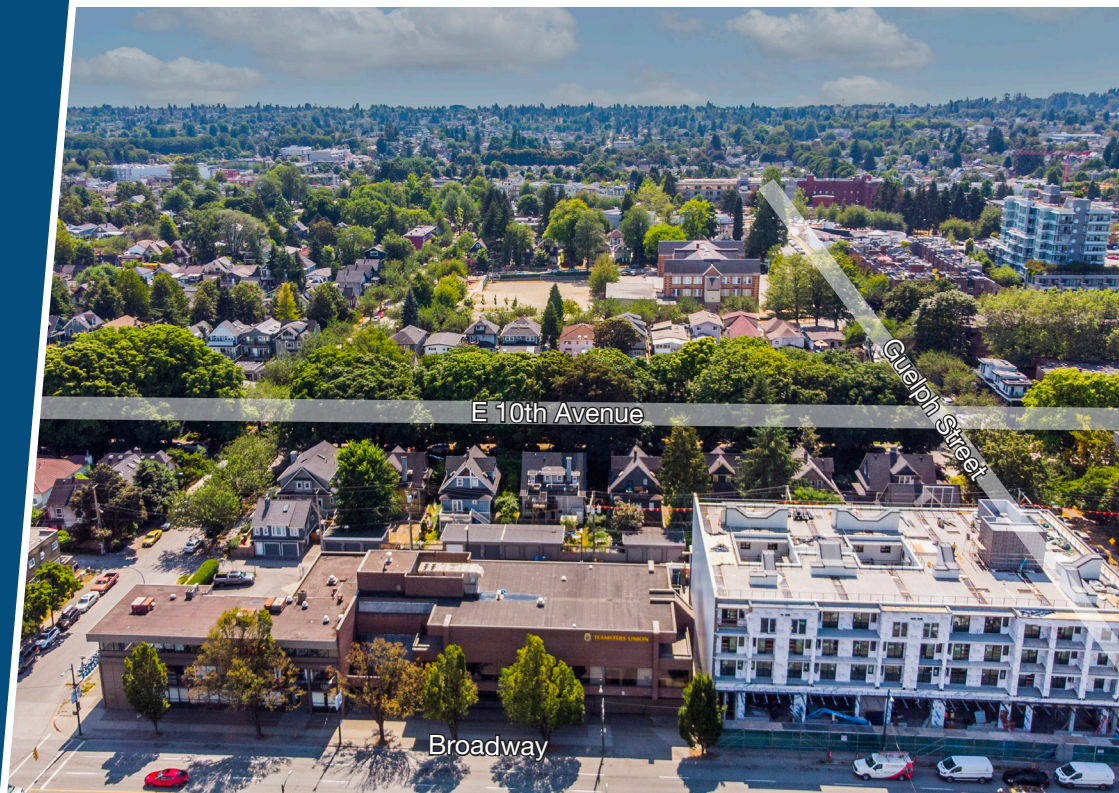
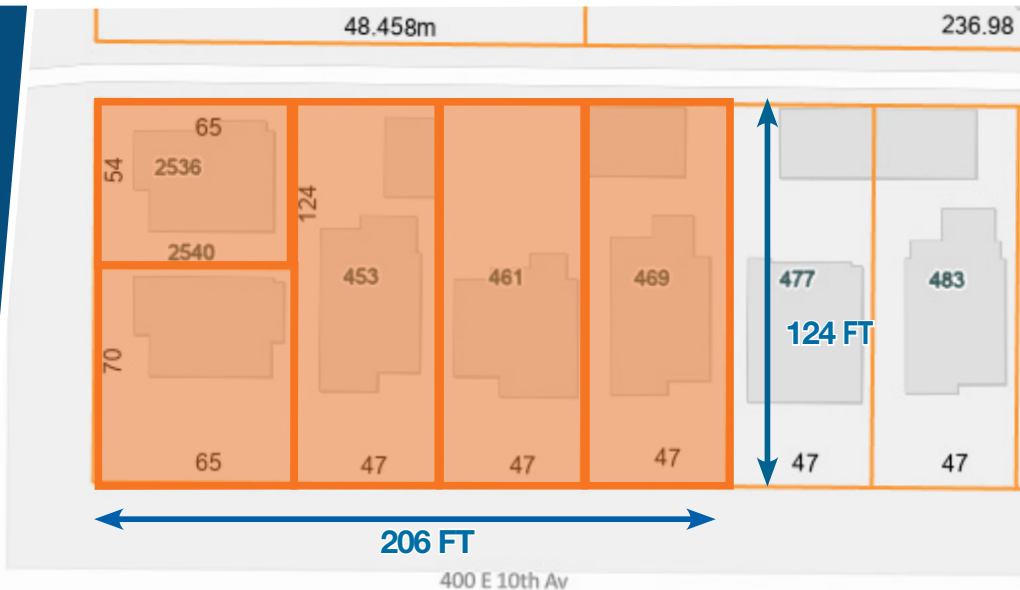
± 140,492 SQFT

Dimensions

± 206 FT x 124 FT

Improvement

15 Tenanted Units
(contained within five dwellings)



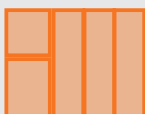


MEDIUM TO HIGH-DENSITY MIXED-USE

DEVELOPMENT POTENTIAL

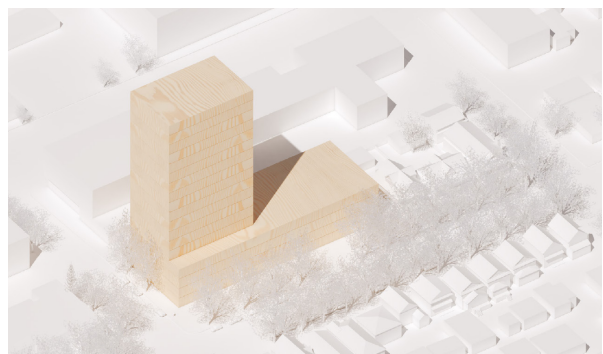
The subject site has been designated “Mount Pleasant RT Areas - Area B” (MRTB), providing a **density of 5.5 FSR for secured rental housing** uses including a minimum 20% of the net residential floor area secured at below-market rents (minor increases in height and density will be considered for delivery of ground-level local-serving retail/service uses or childcare). This highly attractive development site on the northern block of East 10th Avenue between Guelph and St. George Streets has a site frontage of 206 feet and a depth of 124 feet.

 Subject Site

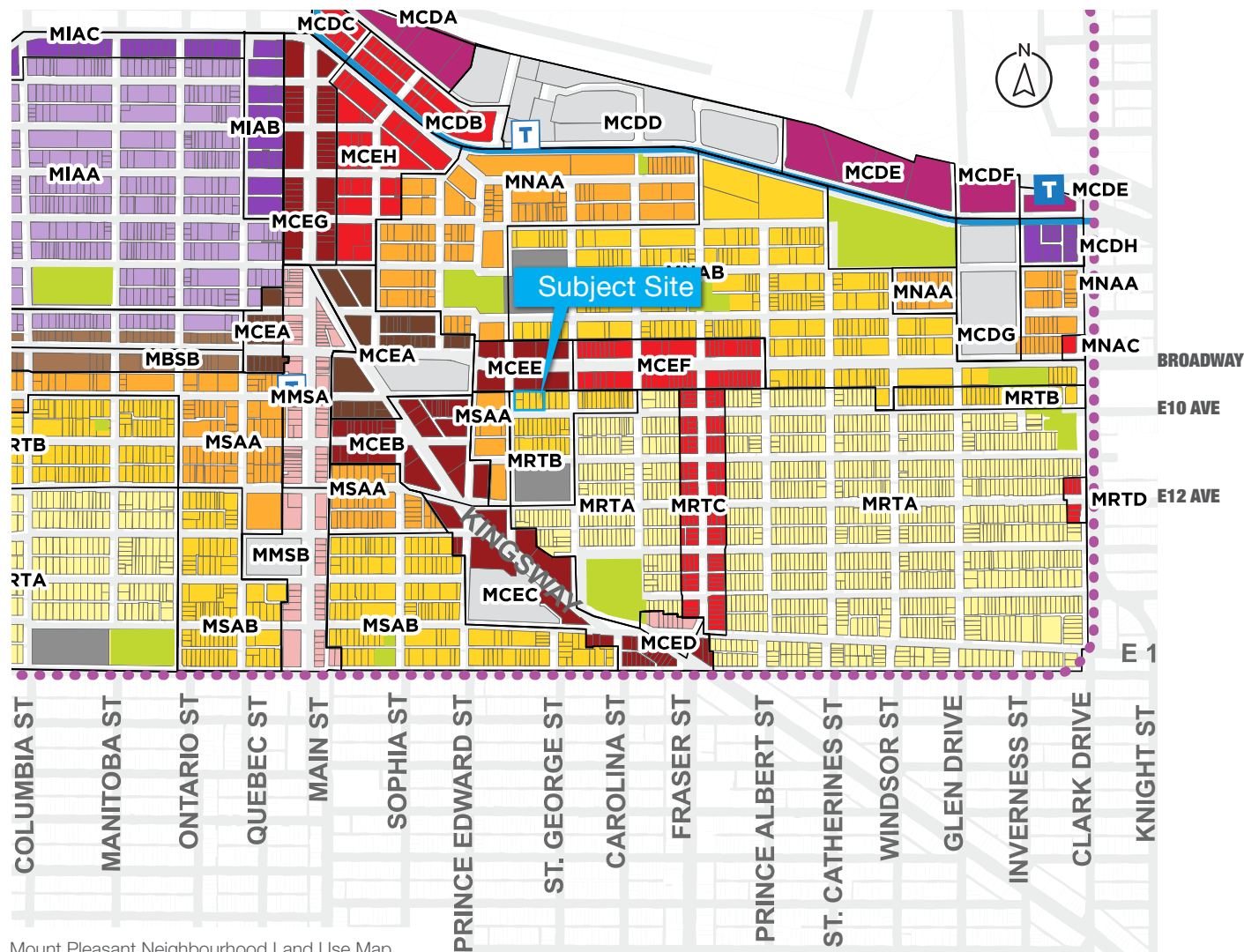


5 lot Assembly

Frontage	206 FT
Gross site area	25,544 SF
Max. Gross Buildable	140,492 SF



LAND USE MAP

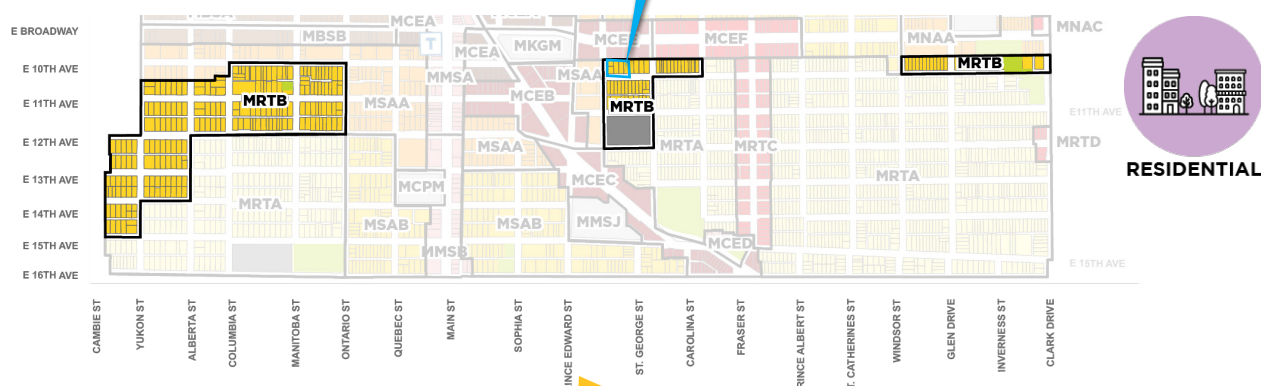


Mount Pleasant Neighbourhood Land Use Map

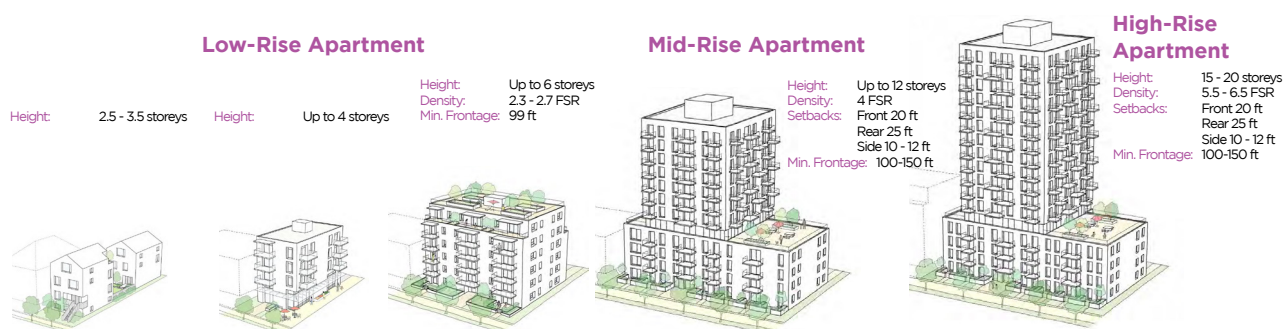
10.25 Mount Pleasant RT Areas - Area B

Subject Site

MRTB



RESIDENTIAL



10.25.1 MRTB Policy Summary Table

Policy Area	Mount Pleasant RT Areas – Area B	MRTB
Uses	Residential, retail/service	
Option/Tenure	Secured rental housing	
Max Height	18 storeys	3-6 storeys
Max Density	5.5 FSR	1.0-2.7 FSR
Min Frontage	45.7 m (150 ft.)	Variable – refer to Built Form and Site Design (Chapter 11)
Notes	<ul style="list-style-type: none"> Minimum 20% of the net residential floor area must be secured at below-market rents (see Housing (Chapter 12) for details. See Land Use (Chapter 7) for cases where lesser site frontage may be considered at the discretion of the Director of Planning. 	<ul style="list-style-type: none"> Applies to site frontages that are less than 45.7 m (150 ft.) or where a tower cannot be achieved due to lot conditions or policy 10.25.2 Height and density allowances to vary based on lot conditions (see Built Form and Site Design (Chapter 11) and sections 11.2 and 11.3 for details) See Land Use (Chapter 7) for cases where lesser site frontage may be considered at the discretion of the Director of Planning.

Additional Policies

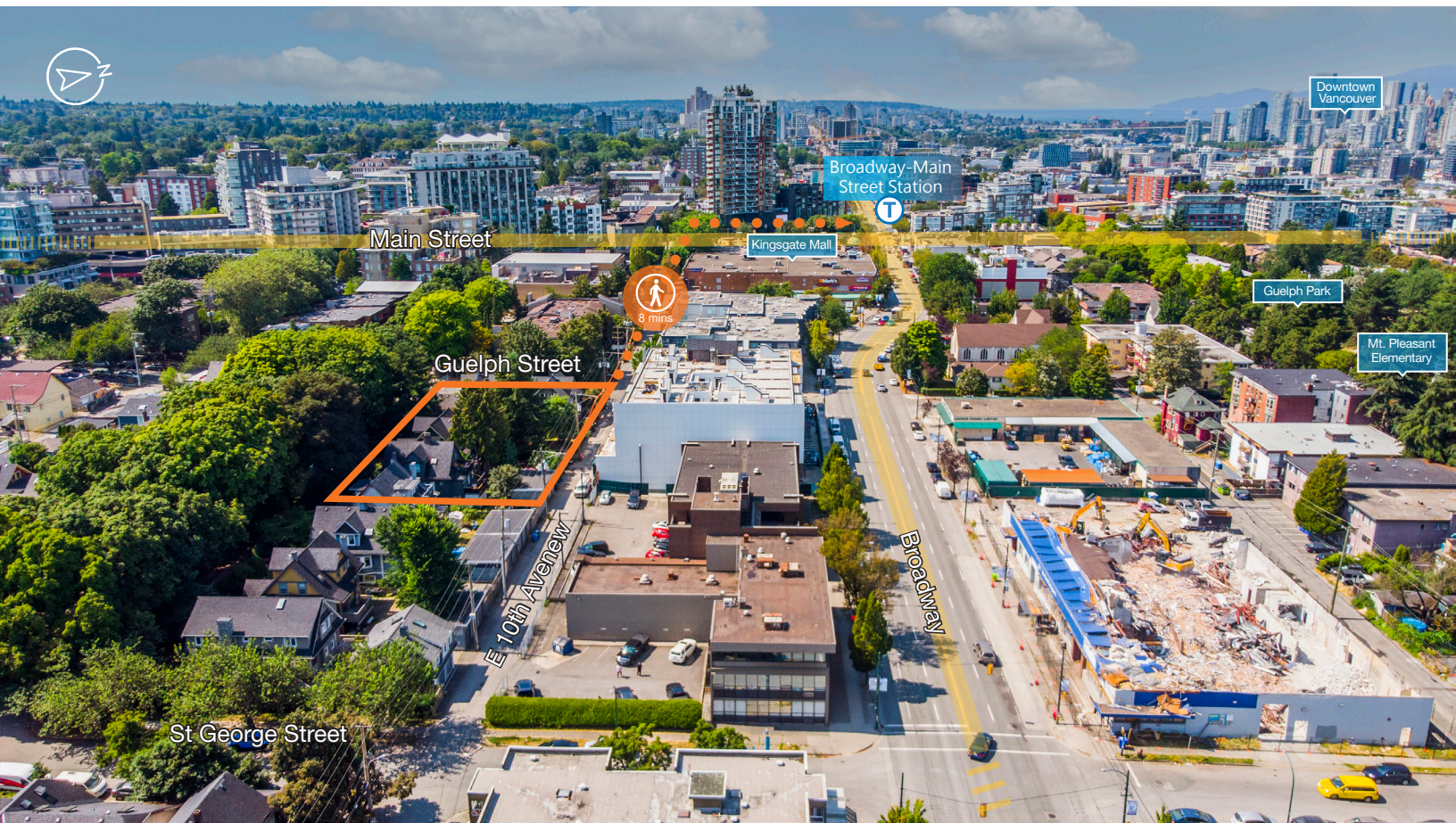
- 10.25.2 There will be a maximum of two towers per block (street to street, including any laneways). However, for the northern block faces along 11th Avenue between Yukon Street and Columbia Street, number of towers per block shall be counted in conjunction with the remainder of the block located in Mount Pleasant South Apartment Area A. For the northern block faces along 10th Avenue between Guelph Street and Carolina Street, only one tower will be allowed on the Mount Pleasant RT Area B block face. Between Cambie and Yukon streets, towers located outside of the Mount Pleasant RT Area B boundaries will not be included in counting the number of towers per block.
- 10.25.3 Minor increases in height and density will be considered for delivery of ground-level local-serving retail/service uses or childcare.
- 10.25.4 For 6-storey apartment buildings, minor increases in density may be considered where 100% of the residential floor area is social housing, generally following the provisions for social housing in the RR-2C district schedule and associated requirements.

Source: shapeyourcity.ca/Broadway-plan

TRANSIT ORIENTED | BROADWAY PLAN

LOCATION

The subject site is ideally located one block off East Broadway, within 10-minute walking distance of abundant amenities including easily accessible transit options and **two future Millennium Line SkyTrain stations**, “Mount Pleasant” and “Great Northern Way-Emily Carr”. It is situated directly on the 10th Avenue Corridor bikeway which is one of the busiest west to east corridors in Vancouver’s cycling network, seeing over 500,000 cyclists on the route per year. The subject site also benefits from being located between two important, growing False Creek Flats (or Great Northern Way) and Mount Pleasant employment hubs, as highlighted by a multitude of planned upcoming office and light-industrial development projects poised to be anchored by organizations such as Lululemon, Animal Logic, AbCellera and Nature’s Path, as well as current major tenants based in the area including Emily Carr University, Samsung R&D Canada, Electronic Arts, Hootsuite and Shaw.





The property is in the heart of Mount Pleasant and less than a block away from Translink's number 8 and 9 bus routes which connect to downtown, UBC and South Vancouver. The Broadway Subject Expansion Project is developing a station at the southwest corner of Broadway and Main Street, as well as just north of Great Northern Way on the east side of Thornton Street, that will both be less than a 10-minute walk from the subject site.

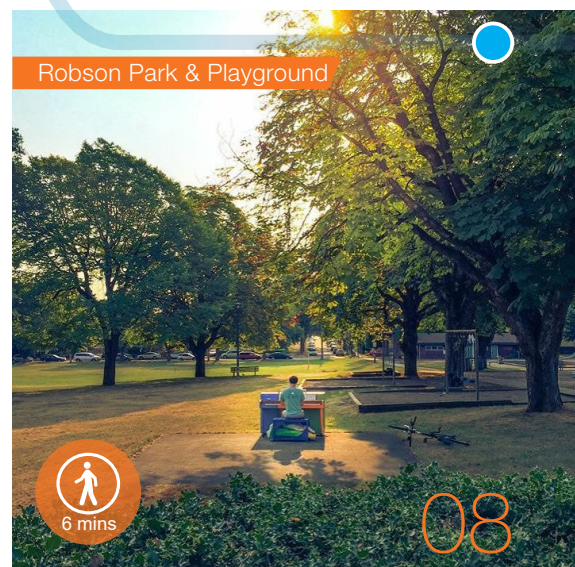
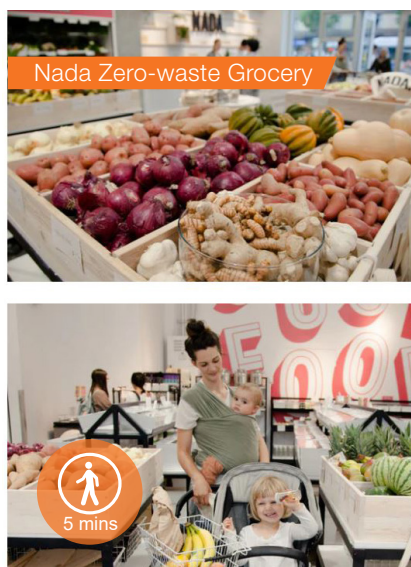
East Broadway is expected to continue to grow, and to be a commercial high street to create a vibrant and livable public realm in one of Vancouver's desirable neighbourhoods to live, work and play. Well-positioned between Broadway and Kingsway, allowing for easy access to abundant living conveniences within a 5 to 10-minute walking distance.

DRIVING

- Downtown
- Vancouver General Hospital
- Whole Foods Market
- Trout Lake Park
- Queen Elizabeth Park
- Emily Carr University
- Brentwood Town Centre

WALKING

- Florence Nightingale Elementary School
- Mount Saint Joseph Hospital
- Robson Park
- Nada Grocery
- Matchstick Café
- Kingsgate Mall
- Osteria Savio Volpe



**MRTB
BROADWAY
PLAN**

JERRY LEE

PERSONAL REAL ESTATE CORPORATION

604.229.5888

jerry@londonpacific.ca

BEN WILLIAMS

PERSONAL REAL ESTATE CORPORATION

604.420.2600 ext 203

bwilliams@londonpacific.ca

ALEXANDER LOUGHEED

604.420.2600 ext 220

alexander@londonpacific.ca

**LONDON
PACIFIC**

LONDON PACIFIC PROPERTY AGENTS INC. | T 604 420 2600 F 604 420 2206 | LONDONPACIFIC.CA

E & O.E.: All information contained herein is from sources we deem reliable, and we have no reason to doubt its accuracy; however, no guarantee or responsibility is assumed thereof, and it shall not form any part of future contracts. Properties are submitted subject to errors and omissions and all information should be carefully verified. All measurements quoted herein are approximate. * Personal Real Estate Corporation

This publication is the property of London Pacific Property Agents Inc. and is protected by domestic and international copyright, trade name and other laws, and other rights unless otherwise specified. Any modification, reproduction, alteration or adaptation is strictly prohibited. © London Pacific Property Agents Inc. reserves all rights.