

FOR SALE

TOWNHOUSE DEVELOPMENT OPPORTUNITY

15904, 15916, 15928 North Bluff Road and 1593 Stevens Street | White Rock



Blair Stewart

604.420.2600 ext 209

bstewart@londonpacific.ca



Grant L. Gardner*

604.420.2600 ext 205

grantgardner@londonpacific.ca

Existing Zoning

RS-1

OCP Designation

Attached Residential (Low Density)

Density

1.0 FSR

Gross Site Area

37,124 SQFT

Max Buildable Area

37,124 SQFT

Frontage

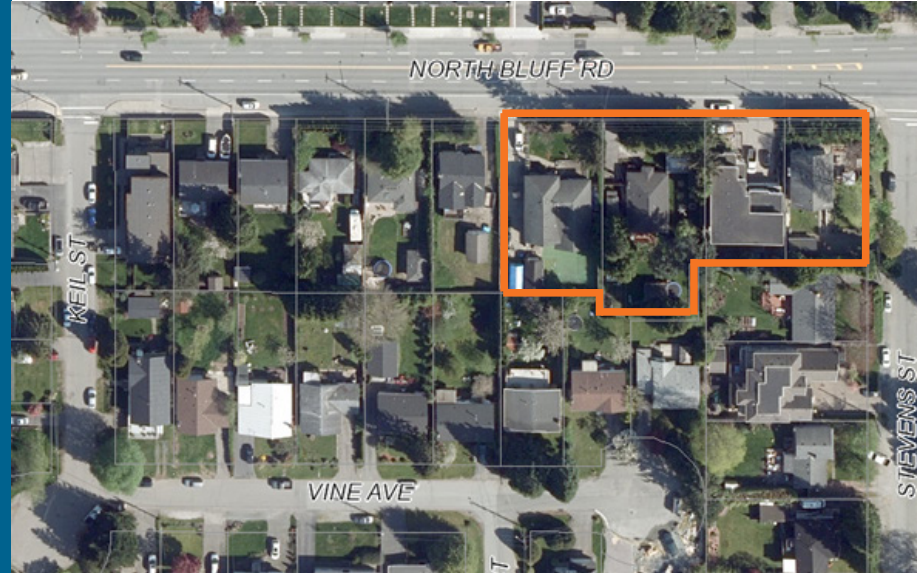
289 FT

Price

Contact Agents

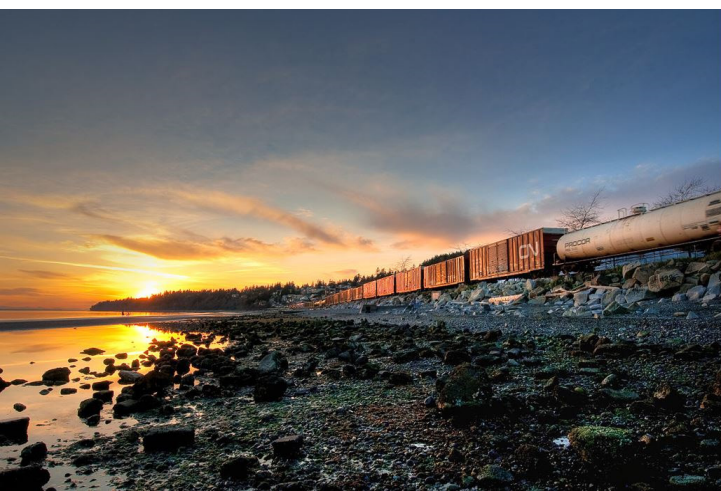
THE LOCATION

NORTH BLUFF EAST NEIGHBOURHOOD



Positioned along North Bluff Road, this rare townhouse development opportunity in a municipality with very little townhouse supply, also fronts Stevens Street which will provide easy egress and ingress to the subject property. Frontage along North Bluff Road (16 Avenue) is approximately 289 feet with a gross site area of approximately 37,124 square feet.

Located in the northeast segment of the “City by the Sea”, and well positioned between major access routes and local amenities, this site brings an exceptional development opportunity in the highly sought after White Rock community. The property is steps away from Earl Marriott Secondary School, a short walk from Peace Arch Elementary School and less than 5 minutes away from the Semiahmoo Shopping Centre and 10 minutes from further shopping nodes including Grandview Corners and the Shops at Morgan Crossing in South Surrey. Public transportation is available immediately out front of the property along North Bluff Road and access is seamless to the commuter routes which include 152nd Street, King George Highway and Highway 99.



Blair Stewart

604.420.2600 ext 209

bstewart@londonpacific.ca

Grant L. Gardner*

604.420.2600 ext 205

grantgardner@londonpacific.ca

**LONDON
PACIFIC**
REDEFINING LAND

E & O.E.: All information contained herein is from sources we deem reliable, and we have no reason to doubt its accuracy; however, no guarantee or responsibility is assumed thereof, and it shall not form any part of future contracts. Properties are submitted subject to errors and omissions and all information should be carefully verified. All measurements quoted herein are approximate. * Personal Real Estate Corporation